

**Pearson Edexcel Level 1/Level 2 GCSE (9–1)**

**Tuesday 4 June 2019**

Afternoon (Time: 1 hour 45 minutes  
(plus 1 minute to start CD for Section B))

Paper Reference **1MU0/03**

**Music**

**Component 3: Appraising**

**Source Booklet**

**Do not return this Source Booklet with the question paper.**

**Instructions**

- This booklet contains the scores in relation to Question 9 of the examination paper.
- Any notes made in this booklet will not be marked or credited.

*Turn over* ►

**R57903A**

©2019 Pearson Education Ltd.

1/1/1/1/1/1/1/1/1/1/1/1/1/1/1/1



**Pearson**

## Familiar, Extract A: Afro Celt Sound System: Release (from the album 'Volume 2: Release')

*This skeleton score shows loops which drop in and out of the mix and the two solos*

### Loop A



### Loop B



### Loop C



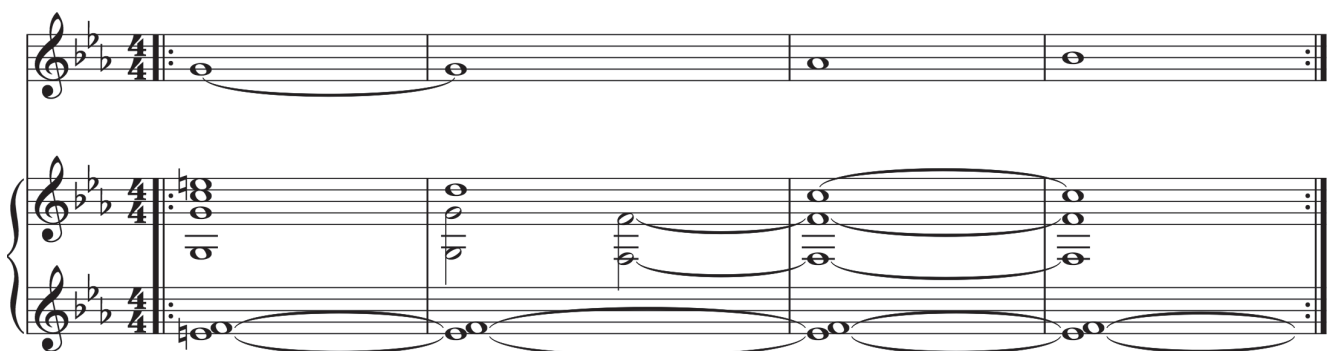
### Loop D



### Loop E



### Loop F



## Loop G

The musical score for 'The Rose Tree' is presented in two systems. The first system contains the first line of the melody and the first line of the accompaniment. The second system contains the second line of the melody and the second line of the accompaniment. The melody is written in a treble clef with a key signature of two flats (B-flat and E-flat) and a time signature of 4/4. It features a series of eighth and sixteenth notes, with triplets and a sextuplet indicated by '3' and '6' above the notes. The accompaniment is written in a bass clef with a key signature of two flats and a time signature of 4/4. It consists of a steady eighth-note pattern, with triplets indicated by '3' above the notes. The score is set against a background of a stylized rose tree.

## Solo 1

[illegible]

## Solo 2

The image displays a musical score for the song "The Wind" by Gustav Mahler. It consists of four staves of music, all in B-flat major (two flats) and 4/4 time. The first staff begins with a treble clef and a key signature of two flats. The second staff continues the melody. The third staff is marked with "(+ 8va higher)" above the first measure, indicating an octave shift. The fourth staff concludes the piece with a glissando (gliss.) marking over the final notes.

## Unfamiliar, Extract B: Panjabi MC: Mundian To Bach Ke (from the album 'The Album')

*This skeleton score shows loops which drop in and out of the mix and the two solos*

### Loop A



### Loop B



### Loop C



### Loop D



Solo 1



Solo 2



**BLANK PAGE**

**BLANK PAGE**

**BLANK PAGE**